





# SPEC SUITE Space Plan View

475 HALF DAY ROAD, SUITE 150  
 Date: 5/10/2022 Sq. Footage: 2,880 RSF  
 Scale: Not to Scale Issued for: Review

-  EXISTING PARTITION TO REMAIN
-  NEW PARTITION

-  EXISTING DOOR
-  NEW DOOR

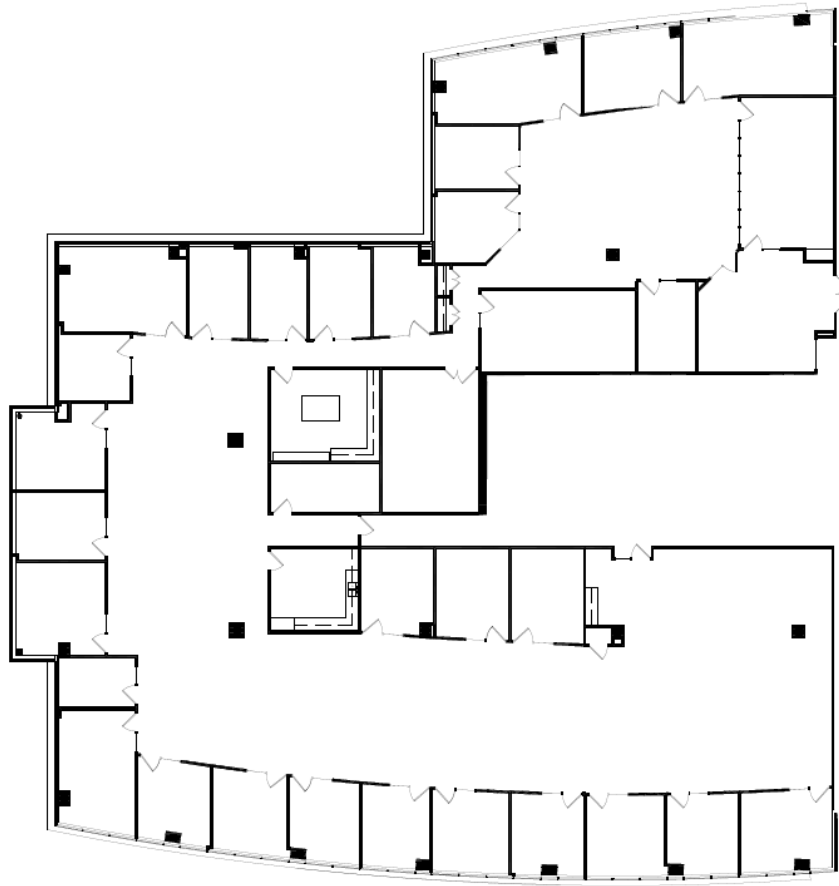


Whitney Architects, Inc.  
 123 N Wacker | Suite 2400  
 Chicago, IL 60606  
 T: 312.471.3770  
 whitneyAD.com

IL CORPORATE LIC. 184-001580

# 475 HALF DAY ROAD

Suite 250 | 15,419 RSF



Key Plan



**Chris Cummins**

+1 773 458 1352

chris.cummins@am.jll.com

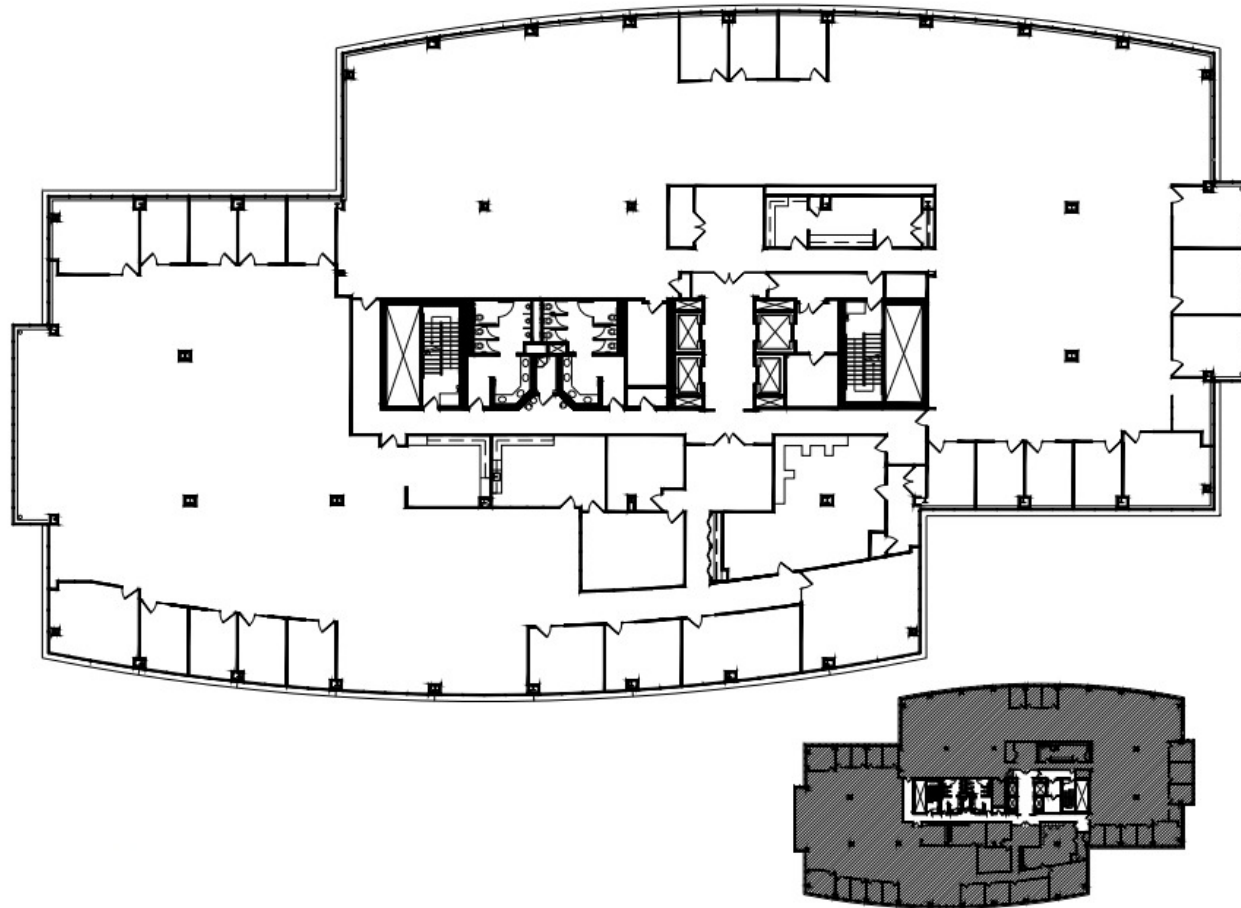
**Julie Koelzer**

+1 773 632 1049

julie.koelzer@am.jll.com

# 475 HALF DAY ROAD

Suite 400 | 29,368 RSF

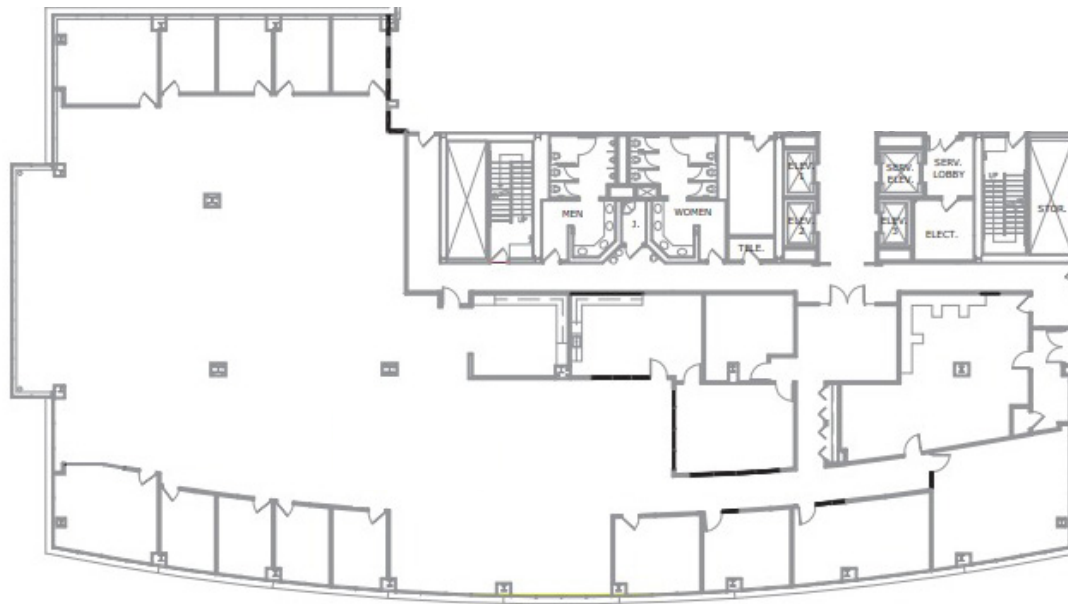


**Chris Cummins**  
+1 773 458 1352  
chris.cummins@am.jll.com

**Julie Koelzer**  
+1 773 632 1049  
julie.koelzer@am.jll.com

# 475 HALF DAY ROAD

Suite 450 | 14,371 RSF

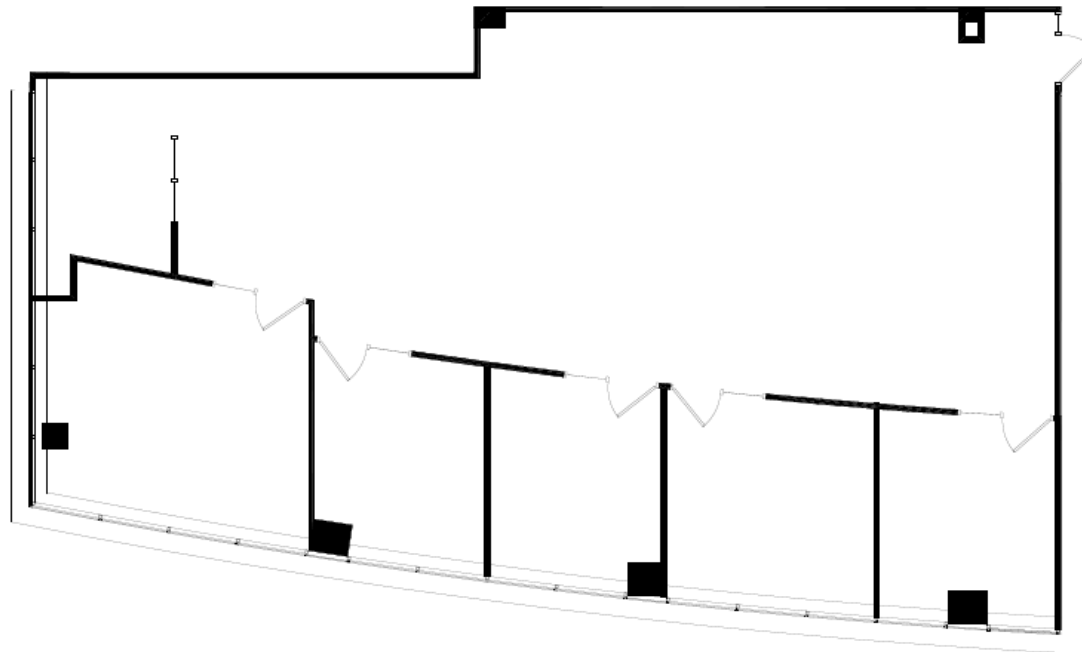


**Chris Cummins**  
+ 1 773 458 1352  
chris.cummins@am.jll.com

**Julie Koelzer**  
+1 773 632 1049  
julie.koelzer@am.jll.com

# 475 HALF DAY ROAD

Suite 525 | 2,647 RSF



Key Plan



**Chris Cummins**  
+1 773 458 1352  
chris.cummins@am.jll.com

**Julie Koelzer**  
+1 773 632 1049  
julie.koelzer@am.jll.com